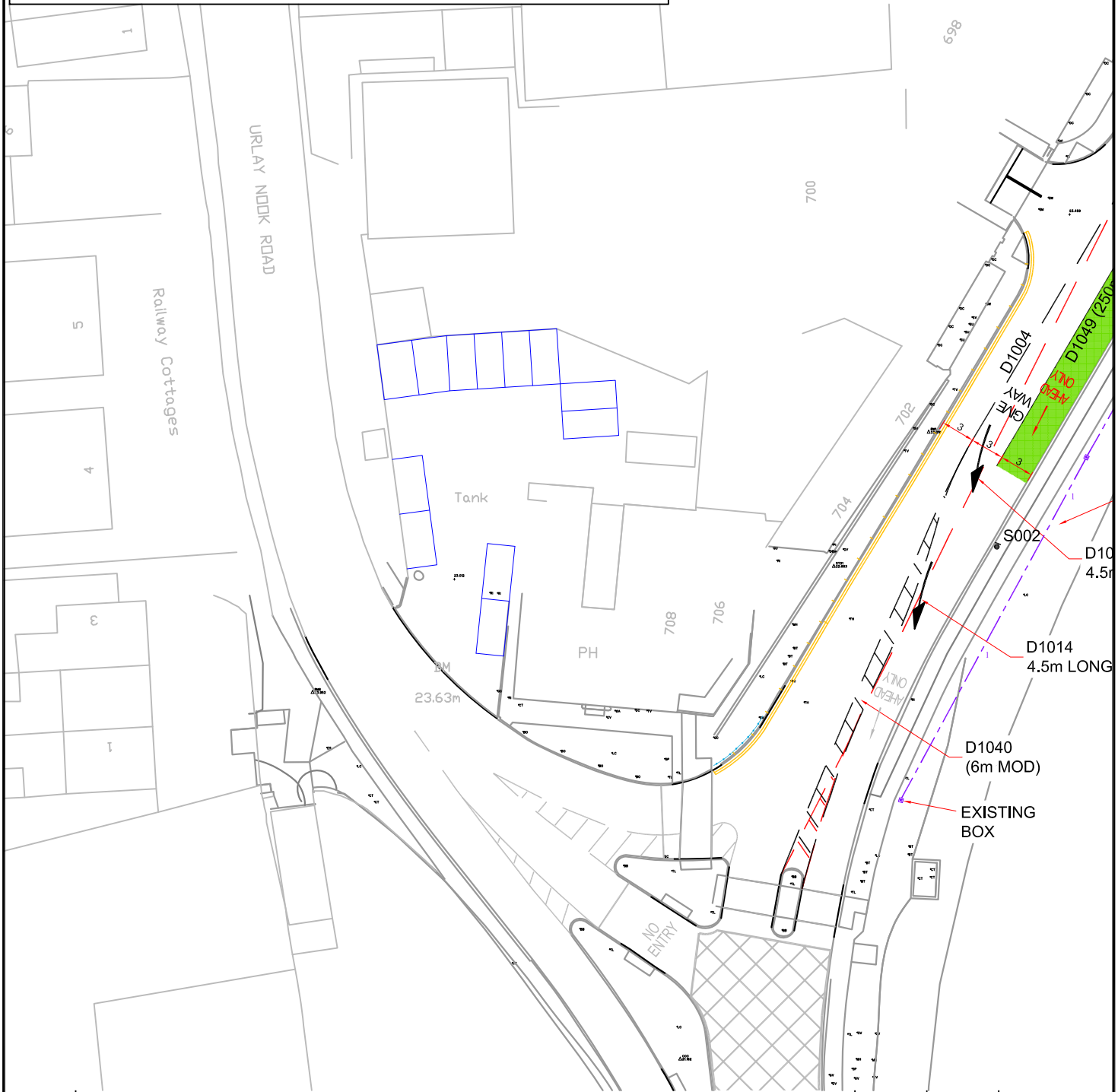


This map is reproduced from Ordnance Survey material with the permission of Ordnance Survey on behalf of the Controller of Her Majesty's Stationery Office. © Crown copyright. Unauthorised reproduction infringes Crown copyright and may lead to prosecution or civil proceedings. Stockton-on-Tees Borough Council 100023297 2011

This drawing should not be scaled. All dimensions must be checked on site and contractor to report any omissions or errors to the contract administrator



| Rev | Description | Drn | Chk | Date |
|-----|-------------|-----|-----|------|
|     |             |     |     |      |

Drawing Status    PRELIMINARY     APPROVAL     INFORMATION     TENDER     CONSTRUCTION



**Stockton-on-Tees**  
BOROUGH COUNCIL

*Passionate about Stockton-on-Tees*

Project  
**YARM ROAD/URLAY NOOK  
JUNCTION IMPROVEMENTS**

Development & Neighbourhood Services  
Head of Technical Services Richard McGuckin B.Eng.,  
C.Eng., M.I.C.E. P.O.Box 229, Kingsway House, West  
Precinct, Billingham, TS23 2YL. Telephone (01642) 393939.  
E-mail: technicalservices@stockton.gov.uk

Content  
**CLEVELAND BAY  
CAR PARKING LAYOUT**

|                             |                            |                     |                                   |     |
|-----------------------------|----------------------------|---------------------|-----------------------------------|-----|
| Scales @ A4<br><b>1:500</b> | Date<br><b>18 JAN 2012</b> | Drawn<br><b>APR</b> | Job No.<br><b>TS/D1/199/1/010</b> | Rev |
|                             |                            | Checked             |                                   |     |